

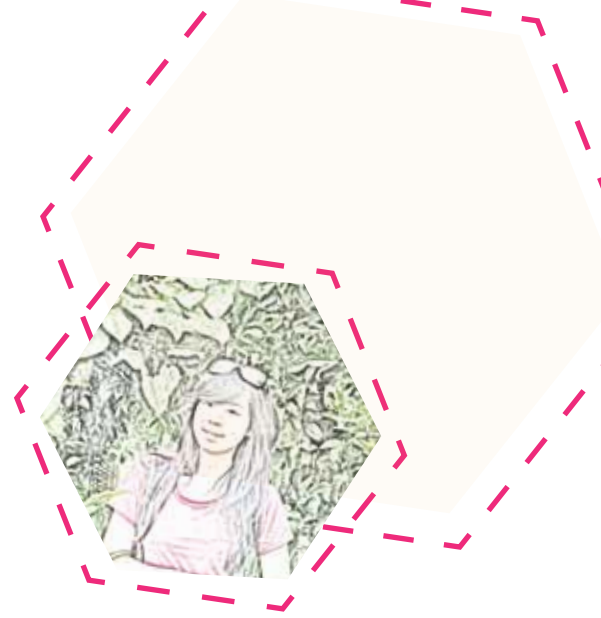
Hi, I am

# Sharleen wiryana



## PERSONAL INFORMATION

Jakarta, November, 30 1992  
sharleenlu.92@gmail.com  
+62 899 919 774 8  
www.kreavi.com/sharleenlu



## FORMAL education

1998 - 2004	Tunas Karya I Elementary School
2004 - 2007	Tunas Karya Junior High School
2007 - 2010	Don Bosco II Senior High School
2010 - now	Bunda Mulia University Jakarta faculty of technology and design "Graphic Design"

2008	TALENTA ENGLISH COURSE
2011	MANDARIN PRIVATE COURSE in Fast Mandarin
2011	"TypoAmbiApply" typography seminar
2011	"Digital Illustration, Digital Painting, and Digital Imaging" seminar
2011	"Concept Design for Entertainment Industry" with WACOM

## INFORMAL education

- S** Adobe Premier Pro ★★★★★
- K** Adobe FLash ★★★★★
- I** Adobe Illustrator ★★★★★
- L** Adobe Photoshop ★★★★★
- L** Adobe Indesign ★★★★★
- L** Corel Draw ★★★★★
- S** Free Hand ★★★★★

## INTERESTED {what i like}

- FASHION
- COOKING
- PHOTOGRAPHY
- MUSIC
- MOVIE
- HANDMADE,
- ETC.

## JOB EXPERIENCE

2012-now	design t-shirt for kids in convection shirt.
March 2013	design logo for brand shoes products online "kroni".
June 2013	design yearbook for SMA Don Bosco II.

## MORE ABOUT ME.

I'm interested in joining your company to get intership about 2 months.  
I'm capable of working alone or in group, hardworker, responsible to deadline, and good working in under pressure.  
I'm willing to learn more and have experience about design.  
Hope you read and call me soon!  
thanks before ^.^



2

0

1

3

# portfolio

*sharleen Wiryana*

# COMPANY PROFILE



## PETROCHINA COMPANY

### 02 Our Clients

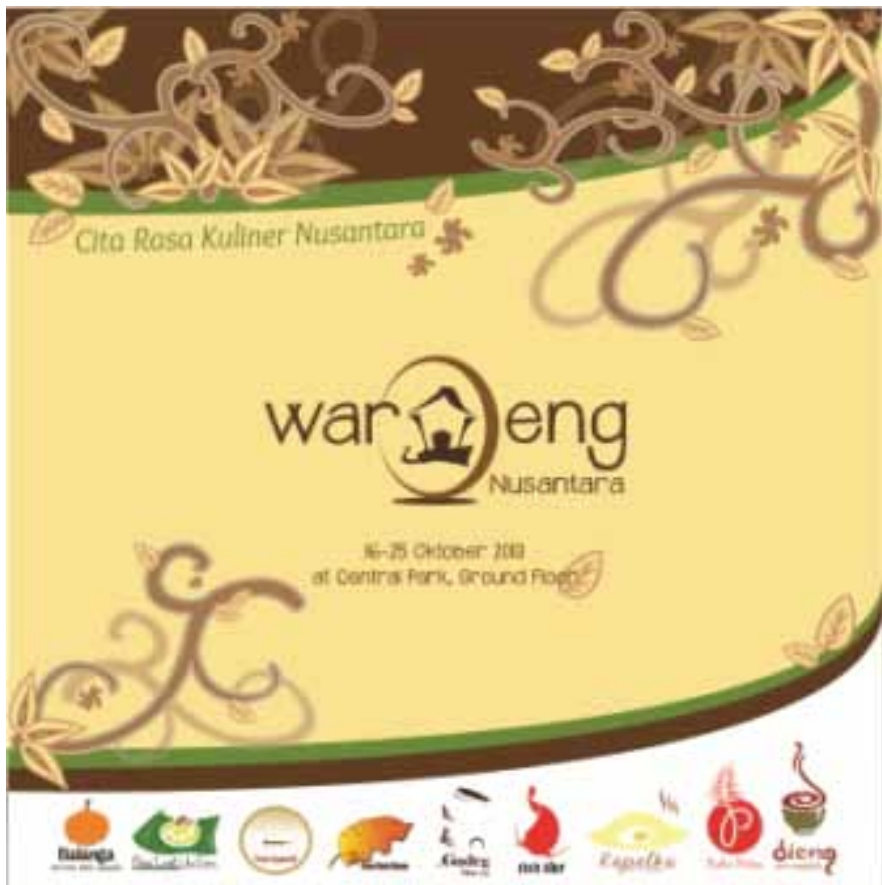
All of our Clients were of the industries that need oil and gas to fuel energy to produce their products, such as governments, energy companies, and all the other companies that needed energy to continue producing their goods. So we as a distributor, we provide the energy that they needed. But most of our concern is all the people that are using gas, so the fuel of their cars, we have to gas station that also needed "PetroChina" that produce to gas for a daily use for people so we act as a actor that makes the lives goes on because we support the nation energy, and we also researching for nation energy by producing friendly energy that doesn't harm the nature.

• ENERGIZE • HARMONIZE • REALIZE •



## CULINARY EXHIBITION

---



WAROENG NUSANTARA

## LOGO

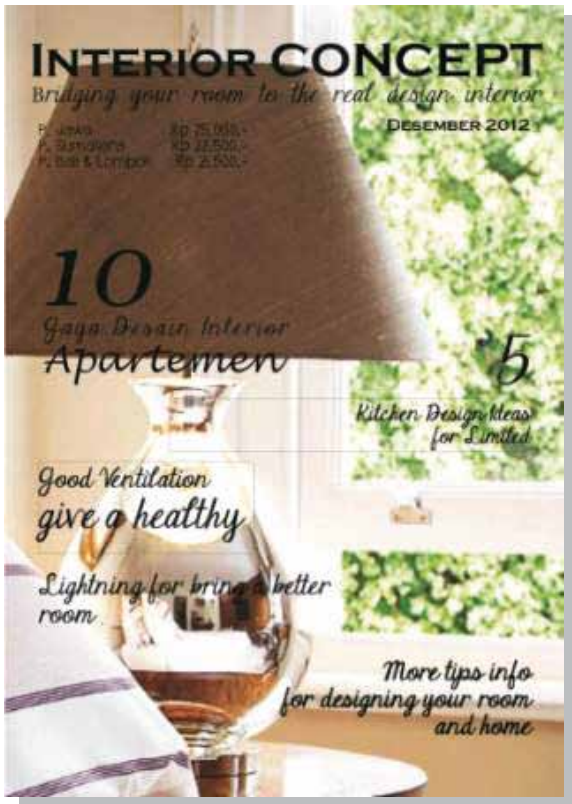
---



PEMPEK KAPALKU

# INTERIOR MAGAZINE

---



## INTERIOR CONCEPT



# CAKES MAGAZINE

---



## SWEETEST



## CAMPAIGN LOGO AND PIN

---

"LEBAI"  
LESTARIKAN BATIK INDONESIA



## FLYER

---



MAXI FASHION  
CONCEPT STORE

## COSMETIC STORE DESIGN

---



SARIYU

RENDERING WITH COPIC



## ILLUSTRATION

---



MARILYN MONROE  
(WAYANG)

# PACKAGING DESIGN

---



NESTLE





# MUSEUM EXHIBITON

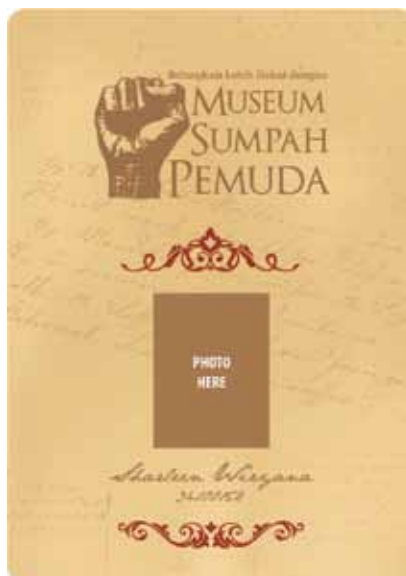
## MUSEUM SUMPAH PEMUDA



\*quotes



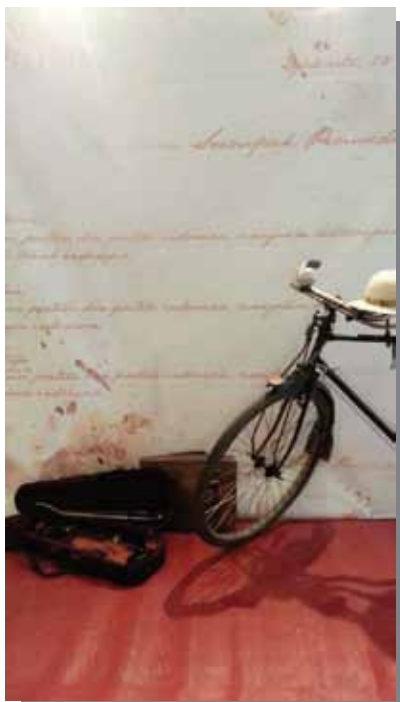
\*nametag



## MUSEUM EXHIBITION



PHOTOBOOTH  
MUSEUM  
SUMPAH PEMUDA



# CHILDREN CLOTHES

---



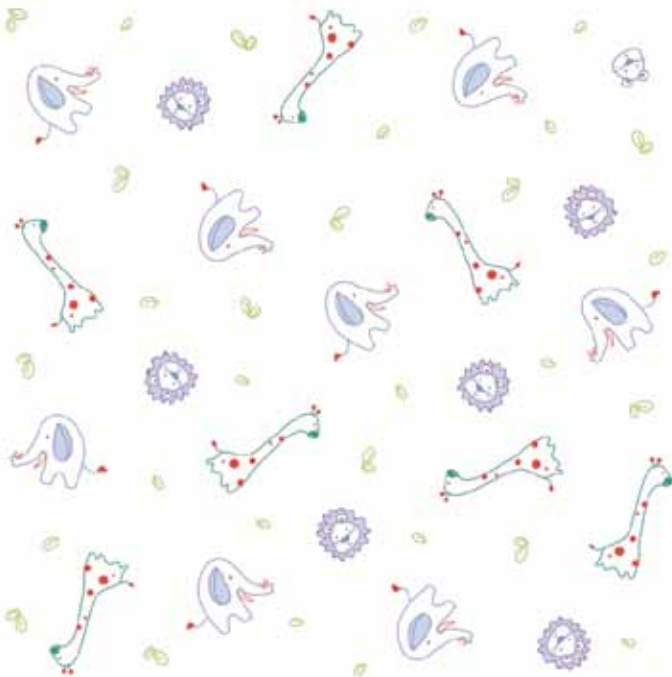
Always Stay Together :)



Happy Holiday :)



eat more and grow fast.



## YEARBOOK DESIGN

---



SMA DONBOSCO II  
PILOMAS



LOGO ONLINE SHOP  
PRODUCT : SHOES



[www.kreavi.com/sharleenlu](http://www.kreavi.com/sharleenlu)

08999197748

thanks for your time  
hope you call me soon!

*sharleen Wiryana*