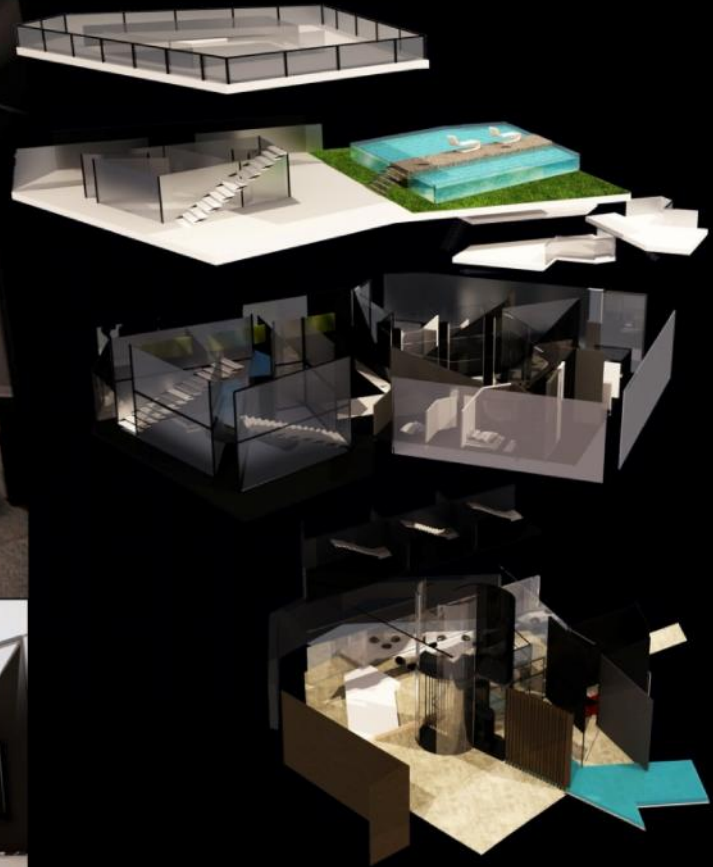


SU  
: HAN  
TI



## ARTHOIRES | Art Hotel & Residential Space

Location - Prinsep Link, Singapore (2012)

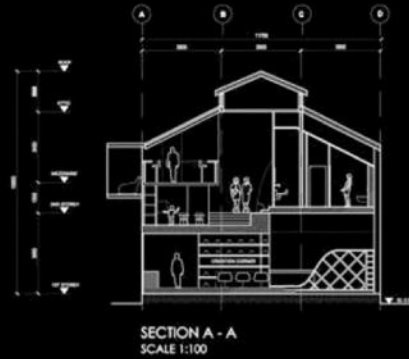
Arthores (ART HOtel RESidential) is a hotel studio designed for tourists and artists. It is not only a place where artists and tourists would take a rest but it is also a place where artists can display their artworks and tourists can also get to see the whole process of the artworks without disturbing one another. It is like a global space where artists and tourists from different countries are all free to share their experience visually.



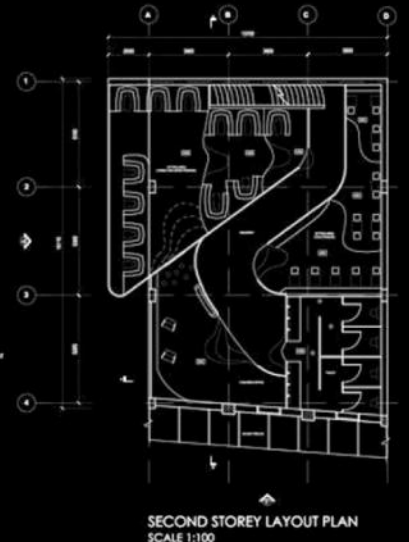
## Minimalism | Corporate Interior Design

Location - Jl. Majapahit Kav. II Batu Ampar, Indonesia 29432

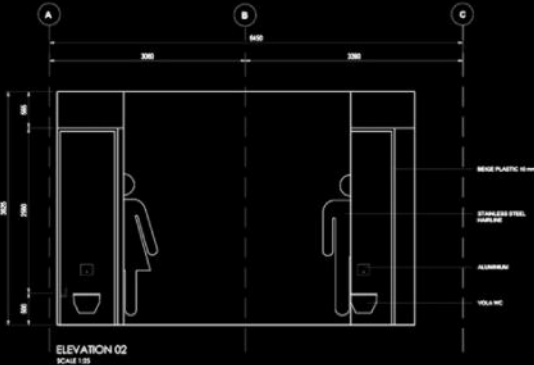
A freelance project designing a contractor corporate in Indonesia. It is inspired by minimalism movement. Incorporating wood and gradient color between black and white creates a contemporary atmosphere in a space



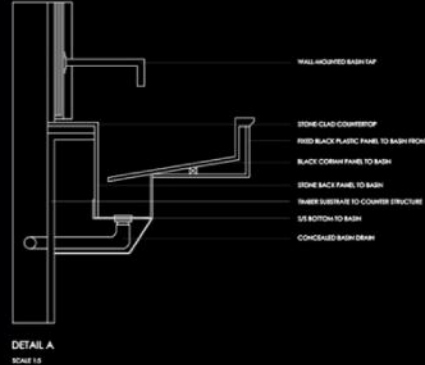
SECTION A - A  
SCALE 1:100



SECOND STOREY LAYOUT PLAN  
SCALE 1:100



ELEVATION 02  
SCALE 1:30



DETAIL A  
SCALE 1:5

- WALL MOUNTED BATH TAP
- STONE CLAD COUNTERTOP
- FIXED BLACK PLASTIC PANEL TO BATH FRONT
- BLACK CORNER PANEL TO BATH
- STONE BACK PANEL TO BATH
- TUBER SUBSTRATE TO COVER STRUCTURE
- ISI BOTTOM TO BATH
- CONCEALED BATH DRAIN

INTERIOR DESIGN COPY	
PROJECT TITLE	
88 ROBERTSON QUAY #01-01 ROBERTSON BLUE SINGAPORE	
DRAWING TITLE	
SECTION A - A	
DRAWING NO.	
SH11100021-BCR1	
DRAWN BY	SUMANTI
CHECKED BY	
SCALE	1:100
DATE	21-09-2011
REVISION DESCRIPTION	

**LASALLE**

## Flow of Jubilant | Cold Stone Ice Cream Retail

Location - Robertson Quay, Singapore (2011)

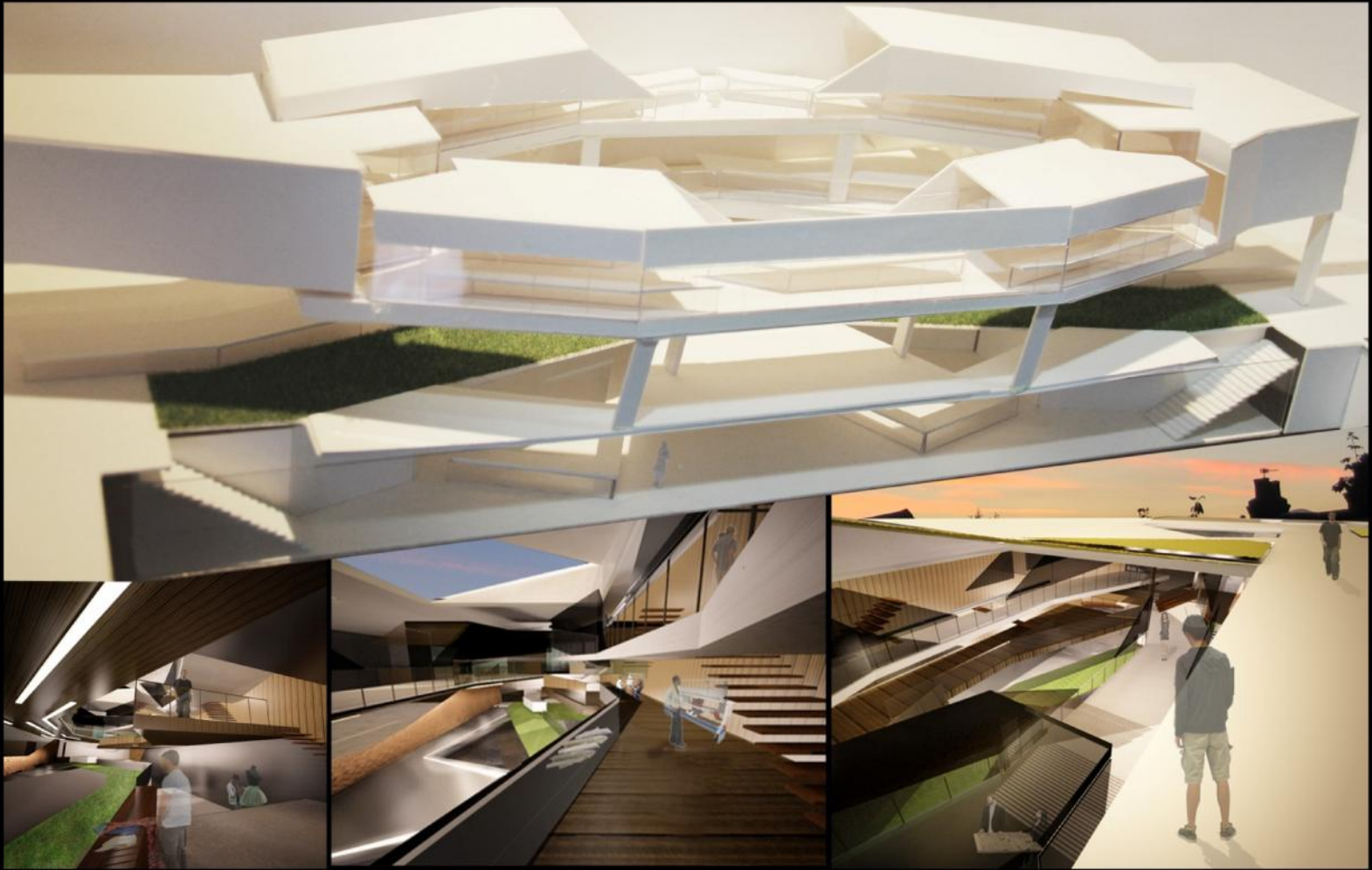
This project aims to design Cold Stone store follows by the Wave of Jubilant concept. It consists of 70% F&B and 30% retail. The retail adds value to enhance the whole experience of the store which is the cake creation process. It is also to let people feel the flow of the walking space that leads people from the counter area to the sitting area by the interior floors, walls, and furniture.



## Tinted Minimalism | Corporate Interior Design

Location - Jl. Majapahit Kav. II Batu Ampar, Indonesia 29432

Freelance project of a corporate in Indonesia. Who says minimalism should use dull colors? This is influenced by a Mexican Architect named Luis Barragan. Used playful colors in minimalist forms and spaces. This can give a more energetic atmosphere which is suitable in office design.



## Droplets | Hedonistic Sustainability Transitional Space

Location - Raffles Design Institute, Singapore (2013)

By looking into the area of **INTERDISCIPLINARY PROGRAMS** and **COLLABORATION BETWEEN FACULTIES**, we are able to create an environment that integrates the school community as a whole.

New Urbanism Theory - Strategic Human Circulation, Spatial Linkage, Multi-Functional Zones/Spaces, Spatial System, Variation of zones & Intermediate Space



## Droplets | Hedonistic Sustainability Transitional Space

Location - Sentosa Boardwalk, Singapore (2013)

There are many controversy over such topic as many people has misunderstood sustainability as "Sacrificing one's enjoyment and pleasure for a healthier and greener environment" which cause people to be reluctant to be sustainable. Thus my project aims to create a hedonistic sustainable environment where nature and buildings integrate as one to redefine the meaning and conception of how people view "Sustainability."

## PROJECTS EXPERIENCE

2013 Hedonistic Sustainability Theory - Droplets  
Final project of Semester 2 Year 3  
Location: Sentosa Boardwalk

There are many controversies over such topic as many people have misunderstood sustainability as "Sacrificing one's enjoyment and pleas a healthier and greener environment" which cause people to be reluctant to be sustainable. Thus my project aims to create a hedonistic sustainable environment where nature and buildings integrate as one to redefine the meaning and conception of how people view "Sustainability."

Being sustainable can also be very pleasurable in depends on the programs and aesthetic wise that blown people's mind towards sustainal

2013 New Urbanism Theory - Difference in Differences  
Final project of Semester 1 Year 3  
Location: Raffles Design Institute

By looking into the area of interdisciplinary programs and collaboration between faculties, we are able to create an environment that integ the school community as a whole

Principles of New Urbanism that can lead us to design a space that is interactive and keep inspiring different faculties people to produce innovative things

2012 IHG Hospitality Competition – ArtHores (Hotel & Residential)  
Location: Space Furniture, Prinsep Link

To create "unconventional convention" of current boutique hotel, incorporate with art gallery to enhance the activity of the hotel

Achievements:

More understanding of how to integrate two different activity in subtle way

Controlling human interaction between hotel customers and artists

2012 Cold Stone Retail – Flow of Jubilant  
Location: Robertson Quay

To study a brand concept such as atmosphere that it wants to give to customer, signature color, flow of customer in purchasing the product, etc

Achievements:

To enhance a certain brand signature essence, not only through visual but also by giving them floor to emphasis its activity such as stuff singing while mixing the ice cream through space planning



2011 Residential reflected by User's Profession – Ballet Pirouettes  
Location: Koon Seng Road

To understand user's everyday activity and customize a living and working environment for a professional in the creative industry

Achievements:

For a Ballerina, studio will be a space that he need most and supported spaces and furniture that he need when practicing

Integrate nature into the space for better atmosphere and healthy lifestyle

2011 Natural Structure Project  
Final project of Semester 2 Year 1

Understand, analyze and draw information to develop a design concept

Determine natural structure and translate it into spatial form

Apply ergonomic study into project

Achievements:

Selected for exhibition in Lasalle showcase 2011

2010 Designer Intervention Project  
Final Project of Semester 1 year 1

To be able to discover the philosophy of Famous Architect and apply it into the project.

Deal with given site from lecturer and design based on Designer's philosophy.

Achievements:

Understand ergonomic and site analysis, enhanced critical thinking and worked based on concept

2010 Thye Hua Kwan charity program

To create furniture for fund raising program with recycled material

Achievements:

Able to work as a team and participate in the group project

Selected as one of the best design to represent Thye Hua kwan for fund raising event