

HELLO



GREETINGS, MY NAME IS
RAMA/RAMBO
I'M AN
ART DIRECTOR & DESIGNER

ABOUT ME

Full Name -- Budhi Surya Ramadhana (Rama)
Address -- Jl. Nakulo 133, Manisrejo, Maguwoharjo, Sleman
Religion -- Moslem
Date of Birth -- June, 19th 1983
Place of Birth -- Madiun, East Java
Marital Status -- Married
Language -- English, moderately fluency

ONLINE PROFILE & CONTACTS

- Bē** Behance
www.behance.com/tamaone
- in** LinkedIn
www.linkedin.com/Budhi S Ramadhana
- DA** DeviantArt
www.ironman19.deviantart.com
- Mobile Phone**
081 8086 55 162
- S** Skype ID
ramadhana19

EXPERIENCES

TAMAONE STUDIO

Juni 2012 - present

MARA ADVERTISING

www.maraadv.com
January 2011 - Juni 2012

CREATIVEMATE - BMICG*

www.bmicg.com
July 2009 - December 2010

BBDO/PROXIMITY INDONESIA

www.proximityworldwide.com
February 2008 - February 2009

ITC PERMATA HIJAU

(Sinarmas Group)
June 2006 - July 2007

OTHERS/FREELANCE

Miscellaneous

Art Director & Freelance

Clients : Panther Sports Nutrition, Hench Nutrition, Kanoosh, BioVitamo, Top Results LLC, Vox Nutrition, Apex Natural, TrueAmino Nutrition, Akur Optic, 69 Production.

Creative Coordinator

Clients : Mirota KSM, Harian Kedaulatan Rakyat, BPD DIY, Harrisma, Hyatt Hotel, Hyarta Residence, Natasha Skin care, M150, YAKKUM, Hotel Tentrem, IONs, UKDW, UAJY

Art Director

Clients : Durex, ICI Catylax, Pharmawell, Daihatsu, Universitas Indonesia, KYT helmet, Kawasaki, Sampoerna, Minerva motor, BT Cocoa, Produgen, Scholl

Graphic Designer & FA Artist

Clients : BCA, P&G, Hero Group, Pampers, Bayer, Autocillin, Fonterra Group, Visa, Kompas.com, Snickers, Pertamina

Advertising & Promotion staff

Tenants : All stores in ITC Permata Hijau

Graphic Designer & 3d Artist @Labana EO

Clients : Kalbe (all products)

Graphic Designer @Black Pearl & Neovanity Club

Create flyers, promotions and prints for event's club.

Creative & Production @OOPS! Magazine

Publish monthly magazine for about 6 issues

EDUCATION

Modern School of Design (MSD) Yogyakarta

www.msdc.ac.id
2001 - 2005

Diploma III of Visual Communication Design

Achievements : 3rd winner of Student Card & Study tour's t-shirt.

SKILLS

ADOBE ILLUSTRATOR

ADOBE PHOTOSHOP

ADOBE INDESIGN

AUTODESK 3DS MAX

PREMIERE

MS OFFICE

MAC IOS

COREL DRAW

PRESENTATION

WHAT THEY SAID ABOUT ME

from **LinkedIn**

PORTFOLIOS

clients:



"Rama is my best friend at Proximity, he has good skill not only for design but also for 3D modelling. He is not a complainer and always willing to help client service to develop the creative materials. One of the creative people who still has a good personality."



-- **Andi Alam**, Account Manager, worked directly with Budhi S Ramadhana at BBDO/Proximity Indonesia. Now working at Delphys Hakuholdo International, Singapore

"Rama "Rambo" Ramadhana, that was I used to call him. Working with him was a great experience. Such a detail person in art direction and ideas. He will do anything to reach his standard. But, one thing... never try downgrade his execution standard. He will never go to that direction & fight to the death do defend his art direction standard. It's a good thing I guess. For the any company who hire him, now. Congratulation!!!!... you have choose the right person. Cheers. Good Luck for you, Rambo. See you at the top, Brother."



-- **Reza Lazuardi**, Creative Director, former BMICG*. Now Working at Bintang Pratama Communications, Jakarta.

"just told your ideas to him, and he knows exactly how to develop it into an amazing art!"



-- **Rachmat Fahreza Saleh, Sr. Copywriter**, former BMICG*. Now Working at Pertamina Hulu Energi, Jakarta.

"Budhi S, we call him Rama, is a detail oriented graphic designer. Working with him is such fun experience."

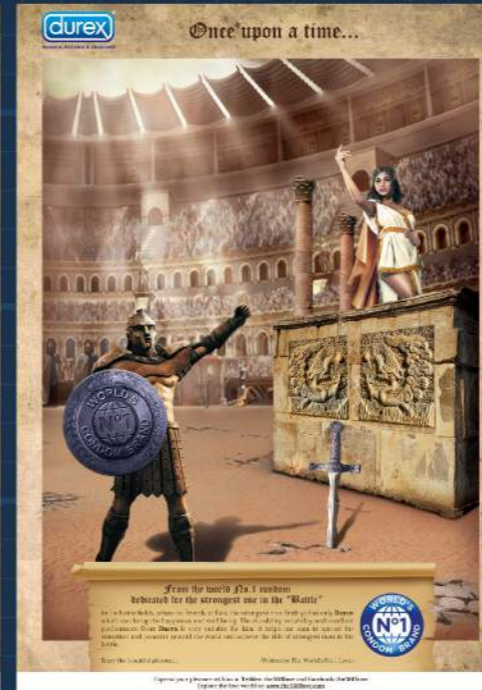
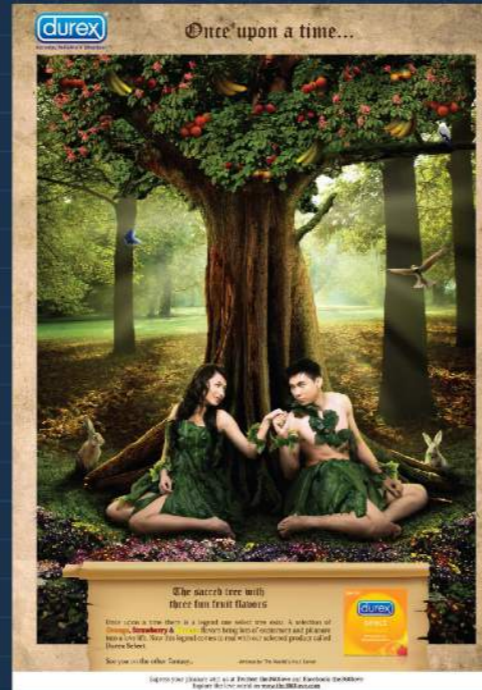


-- **Dian Mustikaningrum**, Copywriter, former BBDO/Proximity Indonesia. Now working at Bambu Digital, Jakarta.

Tanpa melebihi, menurut gw Rambo adalah sosok yang cukup kritis namun tetap santun dalam berpendapat. Cukup cerdas dalam menangkap brief dalam keadaan "deadline" maupun longgar. Graphic Designer yang memiliki Creative Thinker cukup tajam. Pemain futsal yang handal dan sportif serta memiliki "music taste" yang baik bukan karena sama2 penyuka "Claro" Iho ya hahaha



-- **Hari Wibowo**, HR & GA Advisor, former BMICG*. Now working at Humani Group



PORTFOLIOS

clients:



MINERVA SACHS GERMANY

EUROPEAN MACHINE
INSPIRED PERFORMANCE

Megelli **250**

DESIGNED IN EUROPE
RIDDEN AROUND THE WORLD

Specification

Megelli **250 r**

Type Front	100/70 x 17 Tubeless	Seat Height	800mm
Type Rear	130/70 x 17 Tubeless	Wheel Base	1350mm
Fuel Tank Capacity	11L	Ground Clearance	200mm
Height	1040mm	Weight	127kg
Length	1990mm		
Width	825mm		

Specification

Megelli **250 s**

Type Front	100/70 x 17 Tubeless	Seat Height	800mm
Type Rear	130/70 x 17 Tubeless	Wheel Base	1350mm
Fuel Tank Capacity	11L	Ground Clearance	200mm
Height	1040mm	Weight	123kg
Length	1990mm		
Width	825mm		

Specification

Megelli **250 m**

Type Front	100/70 x 17 Tubeless	Seat Height	870mm
Type Rear	130/70 x 17 Tubeless	Wheel Base	1410mm
Fuel Tank Capacity	6L	Ground Clearance	305mm
Height	1030mm	Weight	116kg
Length	2050mm		
Width	805mm		

Engine Type	4 Stroke, SOHC, Air Cooled	Gear Transmission & Speed	1st - 2.333
Bore x Stroke	72.5 x 59.8	Gear Ratio	2nd - 1.789
Displacement	247		3rd - 1.318
Compression Ratio	12.2:1		4th - 1.040
Maximum Power	20.6 @ 8500 rpm		5th - 0.821
Maximum Torque	18.6 @ 7000 rpm	Ignition	12V 50AH
Lubrication System	Forced & Wetsump		
Clutch	Wet type & Shift type		

Battery Type Multi-Twin Spare
Fuel System Configuration Wetsump
Suspension Front Mono Shock
Suspension Rear Mono Shock
Swing Arm FE Aluminum
Wheel Front Rim EPS 17 Cast Wheel
Wheel Rear Rim 3.50 x 17 Cast Wheel

MINERVA SACHS GERMANY

EUROPEAN MACHINE
INSPIRED PERFORMANCE

Megelli **250**

DESIGNED IN EUROPE
RIDDEN AROUND THE WORLD

Specification

Megelli **250 r**

Type Front	100/70 x 17 Tubeless	Seat Height	800mm
Type Rear	130/70 x 17 Tubeless	Wheel Base	1350mm
Fuel Tank Capacity	11L	Ground Clearance	200mm
Height	1040mm	Weight	127kg
Length	1990mm		
Width	825mm		

Specification

Megelli **250 s**

Type Front	100/70 x 17 Tubeless	Seat Height	800mm
Type Rear	130/70 x 17 Tubeless	Wheel Base	1350mm
Fuel Tank Capacity	11L	Ground Clearance	200mm
Height	1040mm	Weight	123kg
Length	1990mm		
Width	825mm		

Specification

Megelli **250 m**

Type Front	100/70 x 17 Tubeless	Seat Height	870mm
Type Rear	130/70 x 17 Tubeless	Wheel Base	1410mm
Fuel Tank Capacity	6L	Ground Clearance	305mm
Height	1030mm	Weight	116kg
Length	2050mm		
Width	805mm		

Engine Type	4 Stroke, SOHC, Air Cooled	Gear Transmission & Speed	1st - 2.333
Bore x Stroke	72.5 x 59.8	Gear Ratio	2nd - 1.789
Displacement	247		3rd - 1.318
Compression Ratio	12.2:1		4th - 1.040
Maximum Power	20.6 @ 8500 rpm		5th - 0.821
Maximum Torque	18.6 @ 7000 rpm	Ignition	12V 50AH
Lubrication System	Forced & Wetsump		
Clutch	Wet type & Multi type		

Battery Type Multi-Twin Spare
Fuel System Configuration Wetsump
Suspension Front Mono Shock
Suspension Rear Mono Shock
Swing Arm FE Aluminum
Wheel Front Rim EPS 17 Cast Wheel
Wheel Rear Rim 3.50 x 17 Cast Wheel

PLEASE VISIT MY ONLINE GALLERY TO GET FURTHER KNOWLEDGES ABOUT MY LATEST WORKS & PROJECTS

Bē Behance
www.behance.com/tamaone

in LinkedIn
www.linkedin.com/Budhi S Ramadhana

DA DeviantArt
www.ironman19.deviantart.com

THANK YOU FOR YOUR ATTENTION

