

# The Ultimate Guide to Creating Professional Tech Packs

Are you prepared to advance your fashion design career? Explore the world of Tech Packs, your guide to transforming imaginative ideas into gorgeous clothing. We'll explain the fundamentals of Tech Packs, their importance, and how to create them with cutting-edge technology in this extensive guide. And what do you know? We're also giving you free Tech Pack templates!

## What Is a Tech Pack, Exactly?

Technical packs, or just "Tech Packs," are comparable to your clothing's genetic makeup. It captures each minute element and technological requirement that makes your design come to life. It serves as a link between your imaginative ideas and the hands that bring them to life. Think of it as the magic formula that guarantees the exact fit and quality of your outfit. It is the core of your fashion collection, not merely a document.

## The Influence of Effective Communication

Has the adage "communication is key" ever occurred to you? In the world of fashion, Tech Packs are the embodiment of this ideology. They serve as the foundation for efficient communication between manufacturers and designers. The more robust your Tech Pack, the more seamless the transition from idea to final product. Your exacting specifications serve as a manual for the manufacturer, guaranteeing that the finished product perfectly captures your vision. **Click Here:** [Top Tech Pack Company In the United States](#)

## The Reasons Tech Packs Change the Game

The following explains why Tech Packs are essential in the world of fashion:

- **Time and Money Saver:** Fewer sample iterations from a well-designed Tech Pack equals less time and money spent on modifications.
- **Accuracy in Pricing:** You can estimate costs more precisely and negotiate prices more easily if your Tech Pack is more complete.
- **Perfect Fit:** Tech Packs help you get the ideal fit by keeping track of measurements and facilitating efficient adjustment.
- **Quality Control:** They serve as a point of reference for quality control, guaranteeing that each batch consistently upholds your vision.

**COVER SHEET**

STYLE NAME: COTTON DRESS      STYLE #: LTD 001      DESCRIPTION: CINCINNATI COTTON DRESS  
 SEASON: FALL 2022      DATE: 1.08.2022      MAIN FABRIC: COTTON

SUB BRAND & SAMPLE NO.: 001 / 0 / M / L

**SKETCH**

FRONT      BACK

**FABRIC**

STYLE NAME: COTTON DRESS      STYLE #: LTD 001      DESCRIPTION: CINCINNATI COTTON DRESS  
 SEASON: FALL 2022      DATE: 1.08.2022      MAIN FABRIC: COTTON

SUB BRAND & SAMPLE NO.: 001 / 0 / M / L

**FABRIC SWATCH**

**BODY FABRIC:**  
 100% COTTON  
 230-250GSM

**FABRIC SPEC:**  
 BREATHABLE  
 ANTI-BACTERIAL  
 SOFT TOUCH  
 MEDIUM WEIGHT

**BILL OF MATERIALS**

ITEM	DESCRIPTION	COLOR	QTY	UNIT
1	SKIRT FABRIC	WHITE	1	100% COTTON
2	WINDUP TAPE	WHITE	1	100% COTTON
3	WINDUP TAPE	WHITE	1	100% COTTON
4	WINDUP TAPE	WHITE	1	100% COTTON
5	WINDUP TAPE	WHITE	1	100% COTTON
6	WINDUP TAPE	WHITE	1	100% COTTON
7	WINDUP TAPE	WHITE	1	100% COTTON
8	WINDUP TAPE	WHITE	1	100% COTTON
9	WINDUP TAPE	WHITE	1	100% COTTON
10	WINDUP TAPE	WHITE	1	100% COTTON
11	WINDUP TAPE	WHITE	1	100% COTTON
12	WINDUP TAPE	WHITE	1	100% COTTON
13	WINDUP TAPE	WHITE	1	100% COTTON
14	WINDUP TAPE	WHITE	1	100% COTTON
15	WINDUP TAPE	WHITE	1	100% COTTON
16	WINDUP TAPE	WHITE	1	100% COTTON
17	WINDUP TAPE	WHITE	1	100% COTTON
18	WINDUP TAPE	WHITE	1	100% COTTON
19	WINDUP TAPE	WHITE	1	100% COTTON
20	WINDUP TAPE	WHITE	1	100% COTTON
21	WINDUP TAPE	WHITE	1	100% COTTON
22	WINDUP TAPE	WHITE	1	100% COTTON
23	WINDUP TAPE	WHITE	1	100% COTTON
24	WINDUP TAPE	WHITE	1	100% COTTON
25	WINDUP TAPE	WHITE	1	100% COTTON
26	WINDUP TAPE	WHITE	1	100% COTTON
27	WINDUP TAPE	WHITE	1	100% COTTON
28	WINDUP TAPE	WHITE	1	100% COTTON
29	WINDUP TAPE	WHITE	1	100% COTTON
30	WINDUP TAPE	WHITE	1	100% COTTON
31	WINDUP TAPE	WHITE	1	100% COTTON
32	WINDUP TAPE	WHITE	1	100% COTTON
33	WINDUP TAPE	WHITE	1	100% COTTON
34	WINDUP TAPE	WHITE	1	100% COTTON
35	WINDUP TAPE	WHITE	1	100% COTTON
36	WINDUP TAPE	WHITE	1	100% COTTON
37	WINDUP TAPE	WHITE	1	100% COTTON
38	WINDUP TAPE	WHITE	1	100% COTTON
39	WINDUP TAPE	WHITE	1	100% COTTON
40	WINDUP TAPE	WHITE	1	100% COTTON
41	WINDUP TAPE	WHITE	1	100% COTTON
42	WINDUP TAPE	WHITE	1	100% COTTON
43	WINDUP TAPE	WHITE	1	100% COTTON
44	WINDUP TAPE	WHITE	1	100% COTTON
45	WINDUP TAPE	WHITE	1	100% COTTON
46	WINDUP TAPE	WHITE	1	100% COTTON
47	WINDUP TAPE	WHITE	1	100% COTTON
48	WINDUP TAPE	WHITE	1	100% COTTON
49	WINDUP TAPE	WHITE	1	100% COTTON
50	WINDUP TAPE	WHITE	1	100% COTTON

**CALLOUTS**

STYLE NAME: COTTON DRESS      STYLE #: LTD 001      DESCRIPTION: CINCINNATI COTTON DRESS  
 SEASON: FALL 2022      DATE: 1.08.2022      MAIN FABRIC: COTTON

SUB BRAND & SAMPLE NO.: 001 / 0 / M / L

**FRONT**

1. LOGO
2. PLASTIC BUTTONS
3. PLASTIC BUTTONS
4. PLASTIC BUTTONS
5. PLASTIC BUTTONS
6. PLASTIC BUTTONS
7. PLASTIC BUTTONS
8. PLASTIC BUTTONS
9. PLASTIC BUTTONS
10. PLASTIC BUTTONS
11. PLASTIC BUTTONS
12. PLASTIC BUTTONS
13. PLASTIC BUTTONS

**CALLOUTS**

STYLE NAME: COTTON DRESS      STYLE #: LTD 001      DESCRIPTION: CINCINNATI COTTON DRESS  
 SEASON: FALL 2022      DATE: 1.08.2022      MAIN FABRIC: COTTON

SUB BRAND & SAMPLE NO.: 001 / 0 / M / L

**BACK**

1. PLASTIC BUTTONS
2. PLASTIC BUTTONS
3. PLASTIC BUTTONS
4. PLASTIC BUTTONS
5. PLASTIC BUTTONS
6. PLASTIC BUTTONS

**REFERENCE PHOTOS**

STYLE NAME: COTTON DRESS      STYLE #: LTD 001      DESCRIPTION: CINCINNATI COTTON DRESS  
 SEASON: FALL 2022      DATE: 1.08.2022      MAIN FABRIC: COTTON

SUB BRAND & SAMPLE NO.: 001 / 0 / M / L

**NEEDLE ZIPPER @ RIGHT SIDE SEAM**

**FRONT POCKETS**

**FIT REFERENCE PHOTOS**

**COLORWAYS**

STYLE NAME: COTTON DRESS      STYLE #: LTD 001      DESCRIPTION: CINCINNATI COTTON DRESS  
 SEASON: FALL 2022      DATE: 1.08.2022      MAIN FABRIC: COTTON

SUB BRAND & SAMPLE NO.: 001 / 0 / M / L

**COLOR 1**

**COLOR 2**

**COLOR 3**

**FACTORY**  
 CINCINNATI  
 13-2802 TYN

**FACTORY**  
 WHEELS SAND  
 13-0000 TYN

**FACTORY**  
 SANDY COTTON  
 16-1225 TYN

**POINTS OF MEASUREMENT DIAGRAM**

STYLE NAME: COTTON DRESS      STYLE #: LTD 001      DESCRIPTION: CINCINNATI COTTON DRESS  
 SEASON: FALL 2022      DATE: 1.08.2022      MAIN FABRIC: COTTON

SUB BRAND & SAMPLE NO.: 001 / 0 / M / L

**SIZE SHEET**

STYLE NAME: COTTON DRESS      STYLE #: LTD 001      DESCRIPTION: CINCINNATI COTTON DRESS  
 SEASON: FALL 2022      DATE: 1.08.2022      MAIN FABRIC: COTTON

SUB BRAND & SAMPLE NO.: 001 / 0 / M / L

SIZE	XS	S	M	L
1. Bust Length (Bust cm/in)	100	105	110	115
2. Bust Length (Bust cm/in)	100	105	110	115
3. Bust Length (Bust cm/in)	100	105	110	115
4. Bust Length (Bust cm/in)	100	105	110	115
5. Bust Length (Bust cm/in)	100	105	110	115
6. Bust Length (Bust cm/in)	100	105	110	115
7. Bust Length (Bust cm/in)	100	105	110	115
8. Bust Length (Bust cm/in)	100	105	110	115
9. Bust Length (Bust cm/in)	100	105	110	115
10. Bust Length (Bust cm/in)	100	105	110	115
11. Bust Length (Bust cm/in)	100	105	110	115
12. Bust Length (Bust cm/in)	100	105	110	115
13. Bust Length (Bust cm/in)	100	105	110	115
14. Bust Length (Bust cm/in)	100	105	110	115
15. Bust Length (Bust cm/in)	100	105	110	115
16. Bust Length (Bust cm/in)	100	105	110	115
17. Bust Length (Bust cm/in)	100	105	110	115
18. Bust Length (Bust cm/in)	100	105	110	115
19. Bust Length (Bust cm/in)	100	105	110	115
20. Bust Length (Bust cm/in)	100	105	110	115
21. Bust Length (Bust cm/in)	100	105	110	115
22. Bust Length (Bust cm/in)	100	105	110	115
23. Bust Length (Bust cm/in)	100	105	110	115
24. Bust Length (Bust cm/in)	100	105	110	115
25. Bust Length (Bust cm/in)	100	105	110	115

**Inverted Pleat**

**Box Pleat**

**LABELS & TAGS**

STYLE NAME: COTTON DRESS      STYLE #: LTD 001      DESCRIPTION: CINCINNATI COTTON DRESS  
 SEASON: FALL 2022      DATE: 1.08.2022      MAIN FABRIC: COTTON

SUB BRAND & SAMPLE NO.: 001 / 0 / M / L

**LOGO**

**BARCODE**

**SIZE**

**LOGO**

**FACTORY REMARKS**

STYLE NAME: COTTON DRESS      STYLE #: LTD 001      DESCRIPTION: CINCINNATI COTTON DRESS  
 SEASON: FALL 2022      DATE: 1.08.2022      MAIN FABRIC: COTTON

SUB BRAND & SAMPLE NO.: 001 / 0 / M / L

**FACTORY REMARKS**

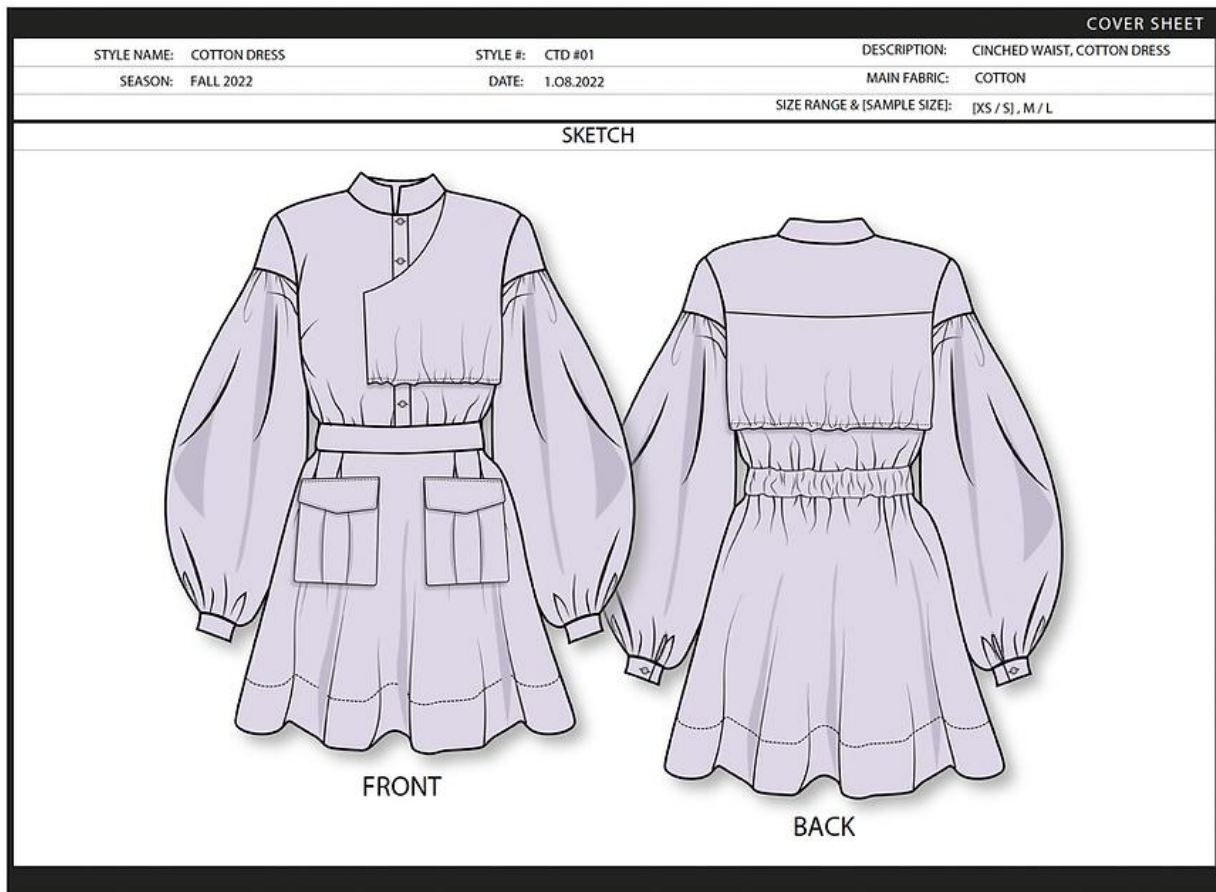
- Team Harmony: Tech Packs let buyers, product developers, designers, and quality control planners work together smoothly.

## What Does a Tech Pack Contain?

A tech pack is a veritable gold mine of pertinent data. Although each product has unique details, the following are essential elements: **Click Here:** [Tech Pack Services in United States](#)

### 1. Sketches of Fashion Flats

Provide manufacturers with detailed sketches of your project from various perspectives so they can see the form and structure of your work. Consider these sketches for your masterwork.



## 2. Materials Bill (BOM)

The array of things you'll need, including labels, zippers, and fabrics and threads. A thorough BOM guarantees that the quality of the finished product aligns with your vision.

FABRIC						
STYLE NAME:	COTTON DRESS	STYLE #:	CTD #01	DESCRIPTION:	CINCHED WAIST, COTTON DRESS	
SEASON:	FALL 2022	DATE:	1.08.2022	MAIN FABRIC:	COTTON	
				SIZE RANGE & [SAMPLE SIZE]:	[XS / S], M / L	
FABRIC SWATCH				FABRIC CONTENT		
<p style="text-align: center;">BODY FABRIC</p>				<p>BODY FABRIC: 100% COTTON 220-350 GSM</p> <p>FABRIC SPECS: -BREATHABLE -ANTI BACTERIAL -SMOOTH SOFT TOUCH -MEDIUM WEIGHT</p>		
BILL OF MATERIALS						
#	ITEM	DESCRIPTION	COLOR	CODE	QTY	SUPPLIER
A	BODY FABRIC	100% COTTON , 220-350 GSM				FTY SOURCE
B	WIDE ELASTIC	WIDE ELASTIC TAPE , 1"2"				FTY SOURCE
C	ELASTIC	ELASTIC TAPE , 1/2 "				FTY SOURCE
D	ZIPPER	NYLON COIL HIDDEN ZIPPER , WITH ROUND PULLER			1	FTY SOURCE
E	BRAND LABEL	WOVEN DAMASK LABEL, HOT CUT, 3" W X 3" H	WHITE [BLACK TEXT]		1	FTY SOURCE
F	CARE LABEL	FOLDED CARE LABEL, WOVEN SATIN, 1"W X 2"H	WHITE		1	FTY SOURCE
K	THREAD	THREAD, 100% POLYESTER				FTY SOURCE
L	BUTTONS	RESIN PLASTIC BUTTONS, 4 HOLES , 1/2"			7	FTY SOURCE

## 3. Specifics for Garment Measurements

a thorough breakdown of the measurements for every part of your clothing. Accurate measurements guarantee a great fit for your piece.

## 4. Cost Sheet for Garments

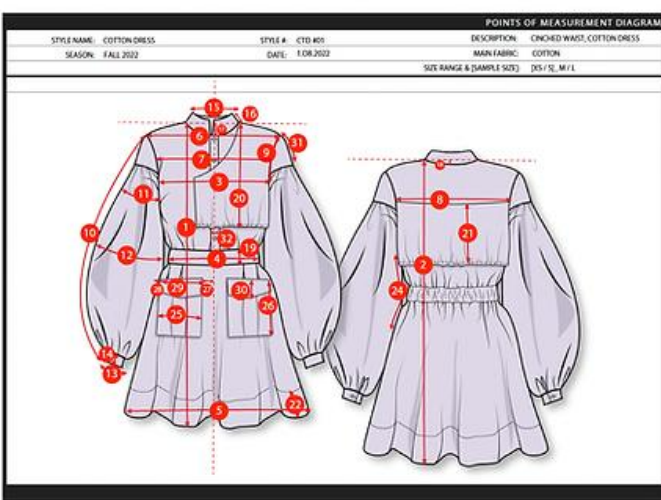
The breakdown of costs associated with creating your design. It's like having a budgeting friend that helps you stay on top of the expenses.

## Case Studies Speak Louder

Look at these actual Tech Packs that were created with ApparelKit:

- Wrap Dress Technical Pack
- Tech Pack for Men's Jackets
- Tech Pack Shoulder Bag for Women

Enter the world of Tech Packs and transform your experience with fashion. Your idea, clearly expressed, will become clothes that reflect your imagination - all because of the powerful Tech Pack!



SPEC SHEET

STYLE NAME: COTTON DRESS    STYLE #: CTD-001    DESCRIPTION: CINCED WAIST, COTTON DRESS  
SEASON: FALL 2022    DATE: 1.08.2022    MAIN FABRIC: COTTON  
SIZE RANGE & SAMPLE SIZE: DS / S, M / L

NOT	U.S.	MM
1) Front Body Length (Bust to HPS)	35	33 1/2
2) Back Body Length (Bust to HPS)	35	33 1/2
3) Chest Width (1" Below Arm)	20	21 1/2
4) Waist 11" Down From HPS	18 1/2	17 1/2
5) Bottom Waist (Measured Straight)	26	31
6) Across Shoulder (Bust to Seam)	17	18
7) Across Front (5" 1/2" Below Bust HPS)	15	16
8) Across Back (5" 1/2" Below Bust HPS)	15 1/2	16 1/2
9) Armhole (Front to Front Straight Measure)	9	9 1/2
10) Sleeve Length (Arm)	24	24 1/2
11) Cuffs	5 1/2	5 1/2
12) Sleeve 7" Up from Sleeve Cuff	10	11
13) Sleeve Opening	8 1/4	8 1/2
14) Sleeve Cuff Width	2	2
15) Neck Width	6 1/2	6 3/4
16) Neck Height	8 1/4	8 1/4
17) Front Neck Drop	2	2 1/4
18) Back Neck Drop	3/8	3/8
19) Front Waist Height	2 1/2	2 1/2
20) Front Waist Front HPS to Bottom	12 1/2	12 3/4
21) Back Waist Width	6 1/2	6 3/4
22) Back Waist Height	2	2
23) Right Side Inverted Zipper Length	10	10 1/2
24) Front Pocket Width	5 3/4	6
25) Front Pocket Height	5 1/4	6 1/2
26) Front Flap Width @CF	2 1/2	2 1/2
27) Pocket Flap Width @CF	1	1
28) Pocket Flap Length	3 3/4	4
29) Pocket Flap Height	2	2
30) Sleeve Cap Height	5	5 1/4
31) Front Pocket Width	5 1/4	5 1/4

The diagram shows two types of pleats: an inverted pleat and a box pleat. The inverted pleat is shown as a single fold, while the box pleat is shown as a double fold.

By choosing ApparelKit as your partner in activewear design and development, you can benefit from our in-depth knowledge of the industry, access to the latest trends and technologies, and a commitment to delivering sustainable high-quality products that are ethically produced. We understand the importance of creating apparel that not only looks great but also performs well, providing comfort, durability, and functionality.

Join our portfolio of successful activewear brands and let us guide you through every step of the journey, from concept to production. At Apparel Kit, we are passionate about helping you make your mark in the competitive market. Contact us today to discuss your project and discover how we can help you bring your vision to life.

Please visit our website for more information  
[www.apparelkit.com](http://www.apparelkit.com) and schedule your free consultation!

Please email all inquiries to  
[hello@apparelkit.com](mailto:hello@apparelkit.com)

